

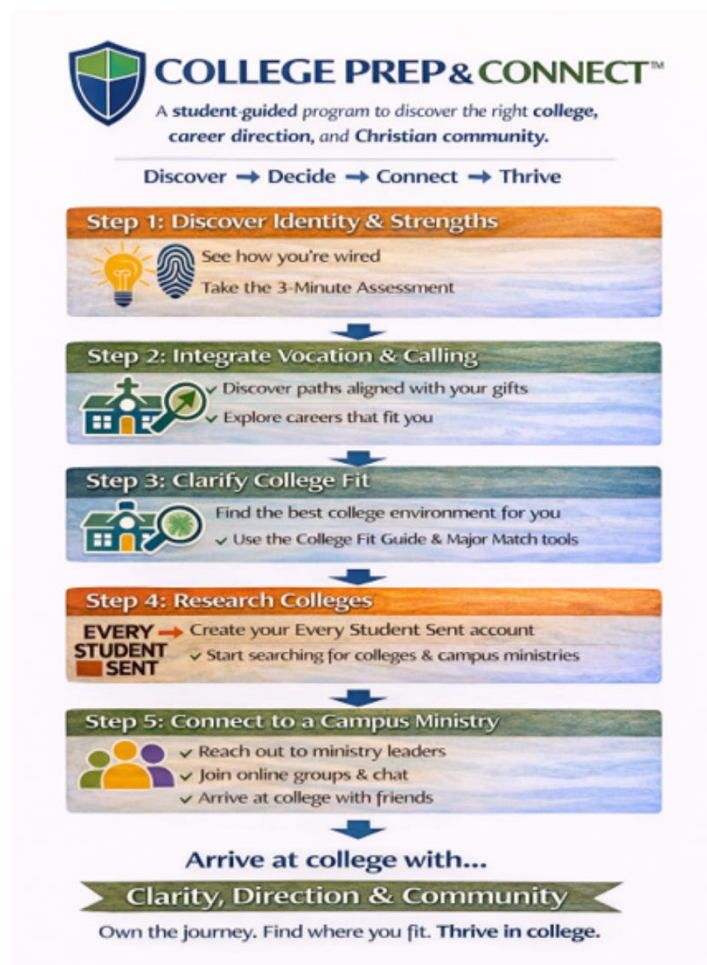
College Prep & Connect Student Worksheet

Starting With the End in Mind: College, Career, and Calling

College is one of the most important transitions in your life—not just academically, but spiritually, socially, and vocationally. One of the best ways to make wise college decisions is to **start with the end in mind**: gaining clarity about where you might be headed so your choices about majors, colleges, and community are more focused and confident.

The **College Prep & Connect** tools are designed to help you understand how you're wired, explore possible career directions, and then identify college environments and communities that support where you're going.

This worksheet gives you a clear, step-by-step pathway to think through your future, ask the right questions, and begin building community **before** college even starts.



Student Worksheet

Name: _____

Date: _____

Grade / Graduation Year: _____

Why This Worksheet Matters

College isn't just about where you go—it's about:

- Who you are becoming
- How you're wired
- The direction and community you're stepping into

This worksheet will help you:

- Understand how you're wired
- Explore career direction before choosing a major or college
- Make thoughtful decisions and connect with Christian community early

Take your time. Be honest. There are no "right" answers—only better questions.

Step-by-Step Guide & Worksheet

Step 1: Understand How You're Wired

Before thinking about careers or colleges, it's important to understand your natural wiring—your strengths, preferences, and tendencies. This becomes the foundation for everything that follows.

Action Items

- Take the **3-Minute Assessment**
- Create your **Student Dashboard Account**

Reflection Questions

1. What were **1–2 results** that stood out to you from your assessment?

2. Did anything surprise you about how you're wired? Why or why not?

3. When you think about school, work, or relationships, where do you feel most:

- Energized? _____
- Drained? _____

STEP 2: Explore Career Paths – Start With the End in Mind

Instead of starting with “Where should I go to college?”, this step helps you explore “Where might I be headed?” Early clarity around career direction can make choosing a major and college simpler—and help you avoid unnecessary changes later.

Tools You’ll Use

- Best-Fit Careers
- Vocational Careers *(if applicable)*
- Ministry Careers *(if applicable)*

Reflection Questions

8. List **2–3 career paths or fields** that stood out to you:

- _____
- _____
- _____

9. What do you like about these careers (work style, impact, creativity, stability, etc.)?

10. At this stage, how clear do you feel about your future direction?

- Very unclear Somewhat unclear Somewhat clear Very clear

11. What questions do you still have about college or careers?

STEP 3: Review College Options – Find the Right College Environment

Now that you have a clearer sense of direction, explore which college environments and majors best support how you're wired and where you're headed.

Tools You’ll Use

- College Fit Guide
- College Major Match

Reflection Questions

4. From the College Fit Guide, which **3 factors** matter most to you right now?
(Circle or list)

Faith & Values Alignment

Distance from home

School Size

Rural or Urban Environment

Average class size

Housing preferences

Roommate compatibility

Academic Structure & Degree Pathway

Advising & Student Support

Career Preparation & Outcomes

Stress, Transition & Responsibility

5. Why do those factors matter to you?

6. From the College Major Match, list **2–3 majors** that feel interesting or aligned:

- _____
- _____
- _____

7. What do you like about these majors?

STEP 4: Check Out Ministries & Churches at Colleges

As you research colleges, begin with **Christian fellowship** so you understand which schools offer the faith-based community you're looking for.

Action Items

- Create your **Every Student Sent** account
- Research colleges based on Christian fellowship
- Look for campus ministries and churches connected to each school

Reflection Questions

12. List **3 colleges** you're currently interested in:

- _____
- _____
- _____

13. Which of these feels like it could be the *best fit* right now? Why?

14. Did you find any campus ministries or Christian communities at these schools?

- Yes No Not yet

15. How important is it to you to have Christian community in college?

- Not very Somewhat Very Essential

Why?

STEP 5: Connect to Ministries, Churches, & Friends

Don't wait until move-in day to find community. This step helps you arrive already connected.

Action Items

- Reach out to ministry leaders
- Meet future friends and study partners online now
- Begin building relationships before move-in

Reflection Questions

16. How do you usually feel about meeting new people or joining new groups?

17. What do you hope Christian community in college will provide for you?
(Support, friendships, faith growth, leadership, service, etc.)

18. What's one step you can take *this month* to connect with others?

Final Outcome

Arrive at college with clarity, direction, and community.